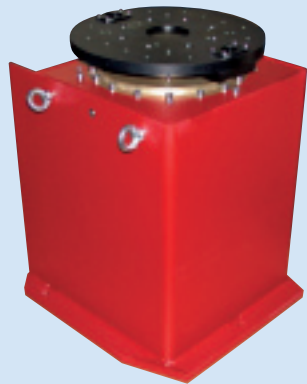


# From ACUTRONIC to AIRBUS A400M

The ACUTRONIC series AC1125L precision system is specifically designed to provide angular rate, acceleration, and position stimuli to devices such as gyroscopes and accelerometers. Typically used for production, this system has been selected for avionics development purposes by AIRBUS Avionics and Simulation in Toulouse.



AIRBUS France, Avionics and Simulation builds systems that optimize the aircraft performance. For the all new European Military Freighter, the A400M, Avionics and Simulation designs and manufactures the Back Up Control Module (BCM), which is tested on the ACUTRONIC Series AC1125L rate table.

